

**CHURCH OF SCOTLAND
PRESBYTERY OF STIRLING**

GARGUNNOCK PARISH

linked with

KINCARDINE-IN-MENTEITH PARISH, Blairdrummond

linked with

KILMADOCK PARISH, Doune



PARISH PROFILE



The Presbytery of Stirling has given us permission to call a Minister to our triple linkage- Gargunnoch Parish, linked with Kincardine-in-Menteith Parish, linked with Kilmadock Parish - and we believe this is an exciting opportunity to lead us in our worship and mission to reach out to those in the parishes and bring us closer to God. This is an unrestricted call

MISSION STATEMENT

We are a community of people who have found grace, joy and peace through faith and fellowship in Jesus Christ.

Our AIMS are:

- to follow the teachings of the Bible and spread the Good News of God's love within the parishes.
- to promote new forms of outreach to all age groups within our communities.
- to take an active role as custodians of the church seeking God's guidance in how we use his gifts and how we care for his creation.

We hope that our new Minister will share our vision and commitment to these aims and give guidance and leadership in realising the potential of our churches.

The appointment will present us with challenges and possible changes in the lives of our congregations but the minister can be assured of the active participation of the three congregations.

The Church communities in all four villages have offered Our Lord prayers and praise and have endeavoured to put into practice, in their daily lives, the teaching and example of Our Lord. We believe the right Minister will help us achieve our mission of the Church being central in the lives of those within the villages

GARGUNNOCK PARISH
linked with KINCARDINE-IN-MENTEITH PARISH (Blairdrummond)
linked with KILMADOCK PARISH (Doune)



General Description

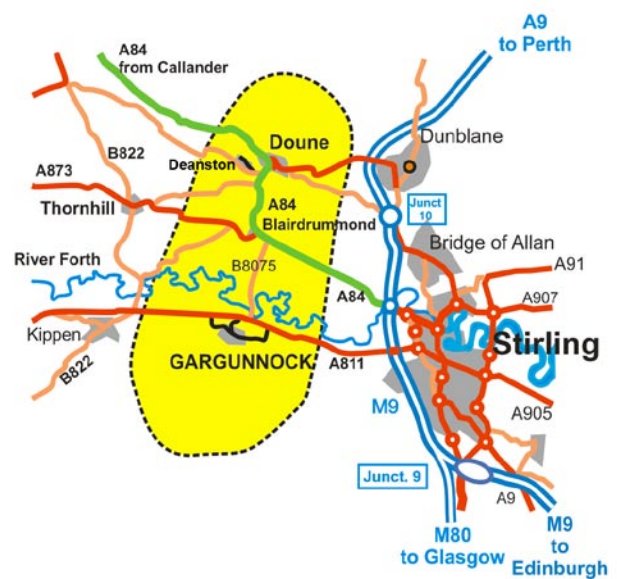
The combined charge comprises three adjacent rural parishes in the Forth Valley of Central Scotland. They extend northwards from the Gargunnoch Hills, part of the northern flank of the Campsie Fells, to the rising ground of the Braes of Doune on the northern side of the valley.

The area is centred at Blairdrummond, about 6 miles west of the City of Stirling, with direct access to the M9/M80 motorways resulting in excellent links to Edinburgh, Glasgow, Perth and Dundee by rail, bus or private transport (approx. one hour) To the west and north-west Loch Lomond, the Trossachs, Oban and Fort William are within easy reach as is the Clyde coast. There exists here, or within easy reach, a varied and interesting mix of local activities and pursuits to suit all ages and abilities.

This is an area of high scenic beauty, its centres of population being Doune & Deanston, Blairdrummond and Gargunnoch with a scattering of farms & smallholdings between.

Doune (pop. c1150) is more a small town than village with c20 shops and services. Another 500 houses may be built here in the near future. Deanston (pop c460) has a single part-time shop and Post Office. Blairdrummond (pop c300) has no shop, Gargunnoch (pop c800) has a single, well-stocked supermarket and an Inn. Stirling is only 15 minutes or so away by car. It is a university city with a very wide range of facilities. The well known Blairdrummond Safari Park lies within the area as do some small caravan parks.

There are four primary schools within the charge for which the minister is chaplain. They are situated at Doune (150



pupils), Deanston (19 pupils), Blairdrummond (43 pupils) and Gargunnoch (76 pupils) North of the river Forth secondary education is provided at McLaren High in Callander (8 miles). South of the river Gargunnoch lies in the Stirling High School (6 miles) catchment area but some parents choose to send their children to Balforn High (13 miles).

The congregations were linked in 2001 and many joint activities take place. During summer United Services alternate between the three parishes, similarly at Christmas and Holy Week. After these services refreshments are served to encourage friendship and fellowship. During the remainder of the year the minister preaches at two of the churches each Sunday with a Pulpit Supply at the third.

Two fellowship meetings - Kirklane Fellowship and Kirk Club - meet monthly during the period September to April and are open to all within the three parishes.



Accommodation

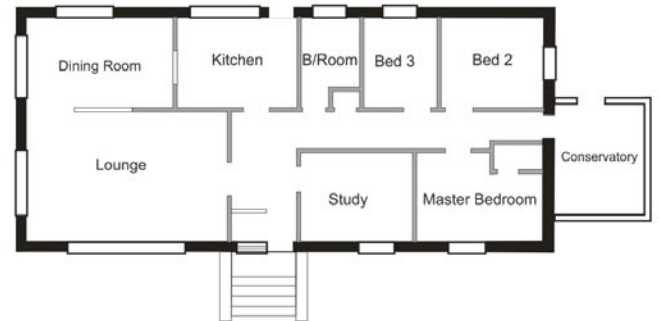
The Manse, opposite the church at Gargunnoch and close to the centre of the village, will be the residence of the new Minister. From there it is 4 miles to Blairdrummond and 6 miles to Doune.

Built in the late 1960s the house is in excellent condition. It is centrally heated by oil, has 6 apartments plus a conservatory and a security alarm system has recently been installed.

The lounge, together with the dining room and the fully fitted kitchen, command extensive views of the village, the carselands of the Forth valley and the mountains of the Highlands beyond.

A single garage plus a utility room with toilet are situated below the western end of the main building. The garden is easily maintained and has an 8ft x6ft greenhouse and a garden shed.

Freeview, Freesat, Sky and Broadband are all available in the village.



The Manse at Gargunnoch sits on an elevated site opposite the church and is only a short stroll away, through the Square, from the well stocked village shop. The Vestry and the Ross Anderson Room can be seen in the right foreground in this view taken from the top of the external stairs to the Gargunnoch Gallery where a viewpoint plate provides identification details of all the mountains on the skyline.



GARGUNNOCK PARISH



The parish contains about 925 inhabitants, with c800 living within the village itself. It is an area of high scenic value, off the main A811 Stirling to Dumbarton Road, with good transport routes to Glasgow, Edinburgh, Perth and Dundee and within easy reach of a varied and interesting mix of local activities and pursuits to suit all ages and abilities.

The enviable quality of life in Gargunnoch is reflected in the demographic variance of its population (the majority of whom are long-standing residents) and well managed growth.

The majority of those employed travel to the larger towns to work but home-based working, thanks to a good Broadband service, is an increasing feature of everyday life.

All of the essential components of village life are here present; A Church, Primary School, a Community Centre, a Shop that supplies most daily needs, an Inn, a Taxi service and a weekday part-time Mobile Post Office service.

There is also an Agricultural Supplier and Farm Shop two miles away at Boquhan near the western boundary of the Parish.

The Kippen Medical Practice holds surgeries twice per week in the Community Centre with a prescription service being available at the local shop.

In June the second oldest Agricultural Show in Scotland is held here and also the annual Gala Day. In August the Village Flower Show is held when many local gardeners display the fruits of their labours. The Gardens of nearby Gargunnoch House are open on several occasions during the year.

Opportunities for daily exercise are available in the form of pleasant local walks or cycle rides through Gargunnoch and Leckie Estates or beyond through Boquhan Estate to the neighbouring village of Kippen. Blairdrummond and Doune areas have a number of quiet country roads which reward the casual explorer.

There are a number of local organisations in the parish which serve a wide range of age groups. The majority of these organisations meet within the Community Centre which has its own management team.

Bridge Club

Carpet Bowling

Community Council

Cricket Club

Embroidery Group

Amateur Football Club

Gargunnoch Songsters

Guides, Brownies & Rainbows

Over 50's Keep Fit

Playgroup

Pool Team

Toddlers' Group

WRI

Yoga



The Coldoch Road, Blairdrummond looking south to the Gargunnoch Hills



Young dancers at the annual Gargunnoch Show

The Parish Church

The church constitution is Model with 14 Elders on the Kirk Session and a Congregational Board consisting of 10 Elders and 4 communicant members. They meet 5 times per year on alternate months.

The roll comprises 158 Members and 24 adherents with an average church attendance at the current 11.30 a.m. service of 28. The Sacrament of the Lord's Supper is celebrated twice per year in May and October.. Facilities are provided for Sunday School age children who move to the Ross Anderson Room after the children's address.

The Ross Anderson Room, adjacent to the vestry, serves as a meeting room in which the Sunday School, Kirklane Fellowship, Embroidery Group, Kirk Session, Congregational Board and small group activities are held.

Outreach

Contacts with other churches in the neighbourhood have developed through the World Day of Prayer and the Kirklane Fellowship.

Opportunity is given for the congregation to reach out and help those in need, both at home and abroad, through retiring offerings at the Easter, Harvest and Christmas services and during Christian Aid Week when all within the village participate.

Past recipients of the congregation's generosity have been... African Harvest, Barnabas Trust, Blythswood Care Shoebox Appeal, UNICEF, START-UP Stirling, Tearfund, Water Aid and our Missionary Partners in Zambia.



The church is T-shaped with stained glass windows on either side of the pulpit and three galleries, accessed via external stairs. The main entrance is through the door to the left

The Church Building

The church overlooks the village on an elevated site that has been used for religious purposes since well before 1500.

After the Reformation a new church was built here in the early 1600s. Later some form of rebuilding or renovation took place in the late 1700s which gave it its current external form. Internally a substantial renovation in 1891 gave it its present day look although minor alterations have taken place in modern times.

It is T-shaped with external stone stairs giving access to three galleries and it can comfortably seat upwards of 300. It is well maintained and has a modern dual-action electrical heating system, an induction hearing loop system, and a modern Viscount electronic pedal organ.

The Ross Anderson Room, built in 1963 and extended in 2002 is situated at the gates, adjacent to the Vestry, built in 1776. The Church Recorders of the Stirling Decorative and Fine Arts Society recorded the church furnishings between 2002 and 2005 and presented the Church with a copy.



Situated on a site used for places of worship since the 1500s Gargunnoch Church is in good condition internally and externally. The white marble cross is that of a former minister and great benefactor to the village

KINCARDINE-IN-MENTEITH PARISH (BLAIRDRUMMOND)

Blairdrummond sits on the busy A84 Stirling to Callander road 6 miles west of Stirling, near its junction with the A873 Thornhill road. More a hamlet than a village, Blairdrummond nevertheless has a church, an adjacent primary school and a community hall just down the road, which is also used for church meetings and other events.

There are a number of local organisations including a Youth Club, which, although not part of the church, is run by some members of the congregation, with others. There is a thriving Curling Club which includes most age groups.

Camphill, Blair Drummond, a short distance away, is a residential community of adults in need of special care and is situated at Blair Drummond House. They take part in some of the church functions.

The Parish Church

The church constitution is Model and there are 8 elders and 6 members of the Congregational Board. There are 93 members on the roll, the average attendance at the 9.30 a.m. service being 15-20.

There is a Sunday School which, at one stage, reached 20 children and a Family Service is held about once a month during term time. The Kirk Session and Board meet 8 or 9 times a year and Communion is celebrated at least twice a year.

There are an average of 3 baptisms, 4 funerals and 3 weddings per year in the church.

The Church Building

The history of Kincardine-in-Menteith church goes back to 1190 when a charter was granted by William the Lion, conferring "the church of Kincardine" to the Abbey of Cambuskenneth.

The present church, standing on the west side of the main road,



The parish church at Blairdrummond, with the Primary School beyond, is an impressive structure. The recently constructed footpath in the foreground leads down to the Community Hall, avoiding the busy main road



was built in 1814, but the ruins of the old church are still visible on the east side of the road, where the current churchyard also lies.

It seats 240, is in good repair and has recently been decorated internally and has had new lights fitted. It features several fine stained glass windows and some interesting memorials.



Lime Avenue, near the entrance to Safari Park, Blairdrummond

KILMADOCK PARISH (DOUNE/DEANSTON)

Kilmadock's main centre of population, Doune, lies at the junction of the A820 Dunblane to Doune road and the A84 Stirling to Lochearnhead Trunk road. Dunblane with its famous Cathedral is 4 miles to the east and Stirling is 8/9 miles south.

Steady growth in its size during the second half of the last century is set to continue in the foreseeable future as planning permission has been approved, in principle, to build 500 new homes in the village, thereby offering the opportunity for congregational growth.



Top - Doune Main St and its ancient Cross. Above left - Doune Church meeting room is entered via the door below the blue sign. Above right - Deanston with its distillery in the distance.

Nearby, Deanston village lies on the south bank of the River Teith, a mile to the south-west of Doune.

Deanston came into being in 1785 as a planned village, providing accommodation for the workers at the newly built Adelphi Cotton Spinning Mill. Cotton spinning has long gone and in its place is a distillery.

Local amenities and groups within the parish:

The parish has more than 20 shops and services, mainly in Doune, plus a range of other businesses in commercial areas to the south of the river Teith. Community organisations include....

- | | |
|-----------------------|-------------------------|
| Amateur Football Club | Curling Club |
| Bridge Club | Lawn Bowling Club |
| Brownies | Playgroup |
| Cricket Club | Woman's Rural Institute |

Leisure

There is a good range of leisure facilities in the area, including a new sports centre in Stirling with swimming pool, ice-rink, cinema, gyms, climbing walls etc. The McLaren Sports Centre at Callander does the same in a smaller scale.

Education

Doune has an excellent primary school and Nursery and there is a small primary school in Deanston. Both schools have an excellent reputation and through the hard work of our previous Minister, we have a good relationship with the school pupils and teachers alike. Pupils graduating from the local primary schools receive their secondary education at McLaren High School located in Callander some 8 miles from Doune.

The Parish Church

The parish has a history of around 800 years of Christian worship since it's founding. Until recently most villagers, at some point, will have used the services provided by the church, either by worshiping with us at Sunday morning services, or attending a baptism, wedding or funeral Service. However, following the sale of our old church, Sunday morning services are now held in the former Evangelical Church meeting rooms located centrally in the village. Wedding and Funeral services take place at our nearby sister church, Kincardine-in-Menteith, at Blairdrummond.

Worship

Morning worship is currently conducted each Sunday at 10.30 am. The Sacrament of Holy Communion is celebrated in March, June, September and December.

We serve tea and coffee after the morning service in the church to continue our fellowship and to welcome visitors.

Music

We use CH4 as our main source of music during our worship but occasionally use other sources. The electronic organ offers opportunity for the organist to fully express his/her musical talents.

Congregation

Kilmadock is a small-sized rural congregation with a Communicants Roll at present of 104 members with a further 87 on the supplementary roll. However, since moving to our new smaller Church building, we have noticed an increase in numbers at our Sunday morning worship. The Congregation meets financial challenges when required.

Church Constitution

There are 10 active members of the Kirk Session who are committed in their work as Elders in supporting the Minister. The Congregational board consists of the active elders and 2 communicant members.



CAN YOU LEAD US?

To find out more please contact us through our:

Interim Moderator:

Reverend Calum Jack

email: email@macjack.co.uk

tel: 01786 475378

Convener of the Nominating Committee:

Mr. Robert Liddell

email: e.liddell477@btinternet.com

tel: 01786 841447

Clerk to the Nominating Committee:

Miss Audrey Birrell

email: BIR112AUAL@aol.com

tel: 01786 860321

To whom applications in the form of a CV with names and contact details of two referees, can also be sent.
